



Wellesley College Club of Los Angeles



Dear [first_name],

June was an exciting month for those who travelled to the college for Reunion with a huge turnout from the Classes of 3's and 8's and, locally, for those who joined SIG get-togethers for the WAAD & WLAN 15th Annual High Tea Quinceañera (featuring Wellesley College Alumnae Association guests Lesley Robertson, Tracey Cameron, and Mared Alicea-Westort), the WIE Happy Hour featuring Wellesley College Career Community Advisor Destiny Barletta, the WAPA parade cheering meetup at LA Pride, and the Friends of Art Huntington Tour!

We also had our WCLA Annual Board Meeting and are excited about our expanded board and new ideas for programming in the coming year. Many thanks to our host Julia Weinstein '73! Also, many, many thanks to Erika Spitzer who has served as our WCLA President for four (4) years; we are very grateful that she will remain on our board as Past President.

Looking ahead to our signature holiday party, we'd love you to let us know what you want! We are taking a quick poll to see if you prefer Saturday night cocktails or Sunday afternoon tea. Please click [here](#)!

We are thrilled by our alumnae response to the call to action for Book Awards. Special thanks to Nikke Finke '75 who was among the first to respond and donated 8 books. Thanks, also, to two additional alums, Jean Billyou '88 and Joi Rideout '82, who responded in June. Because of the tremendous response, we not only filled all requests for spring 2018, but we have 17 sponsored books to award in the coming year!

Our board is still looking for a **Membership Chair** and a **Website Manager (Database)**, and you can learn more about open positions [here](#). If interested, please email WCLosAngeles@alum.wellesley.edu.

We hope you will connect with our Wellesley community this summer at the Student Send-Off on August 19 or at a SIG meetup.

Best wishes,

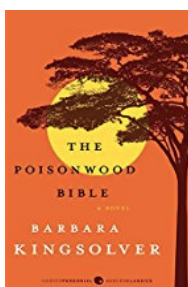
Your WCLA Board

Upcoming Events

Events below are listed in chronological order.

WCLA Book Club - June/July

The Poisonwood Bible: A Novel by Barbara Kingsolver



Date: Sunday, July 1st, 2018

Time: 1-3pm

Location: LACMA Central Court

[5905 Wilshire Boulevard, Los Angeles, CA 90036](#)

Event and parking details: click [here](#)

RSVP to Ottavia Montingelli: wclabookclub@gmail.com

Young Alums Monthly Lunch - July



Date: Saturday, July 7, 2018

(recurring on the first Saturday of every month)

Time: 1:30-2:30pm

Location: Sweetgreen Century City

[10250 Santa Monica Boulevard, Los Angeles, CA 90067](#)

Event details: Click [here](#)

Contact [Rachel Thommen](#) if you have interest/questions.

WIE Annual Meeting and Elections



Join us for a social hour followed by a quick update on the group, the college and next year's agenda. We'll also vote in next year's steering committee.

Date: Sunday, July 8th, 2018

Time: 3:00-5:00pm

Location: The Village Idiot

[7383 Melrose Avenue, Los Angeles, CA 90046](#)

For details, click [here](#).

Event contact: [WIE](#)

LGBTQ+ Stand-Up Comedy Night



Put Your Hands Together Hosted by Cameron Esposito and Rhea Butcher

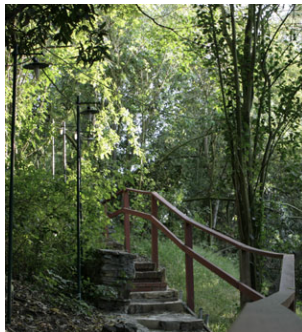
Date: Tuesday, July 10th, 2018

Time: Meet in line at 7:15pm (show starts at 8:00pm)

Location: UCBT Franklin (5919 Franklin Ave, Los Angeles, CA 90028)

RSVP/Questions? Contact WCLA.WAPA@gmail.com

Wellesley-in-Pasadena: Day to Make a Difference



Join your Wellesley sibs and TreePeople for a work day in Debs Park!

Date: Saturday, July 14th, 2018

Time: 9:00am-12:00pm

Location: Audobon Center at Debs Park

4700 North Griffin Avenue, Los Angeles, CA 90031

Event details: Click [here](#)

Questions? Contact [Olivia Hsin](#) or [Val Wong](#)

WCLA Career and Life Transitions Group



Stuck in a rut? Try something new! New life challenge!

Date: Sunday, July 15th, 2018

Time: 4:30-6:00pm

Location: Beverly Hills wine bar location provided upon RSVP.

Event details: Click [here](#)

RSVP/Questions? Contact [Julie Hogenboom](#)

Picnic at the Beach!



Join the Young Alums of Los Angeles for a casual beach meetup. Bring your sunblock, towels, lunch, and a beach ball and get ready to soak in the sun.

Date: Saturday, July 21st, 2018

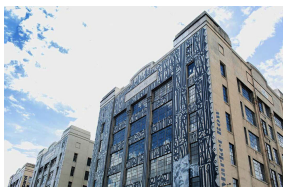
Time: 12-5pm

Location: Lifeguard Tower 26, 2600 Barnard Way, Santa Monica 90405

Beach Parking: \$6-\$15 (varies seasonally)

RSVP/Questions? Contact [Rachel Thommen](#)

"Welcome to LA" Art Crawl



Friends of Art and Young Alums!

Date: Saturday, August 4th, 2018

Time: 10:30am-12:30pm (tour only)

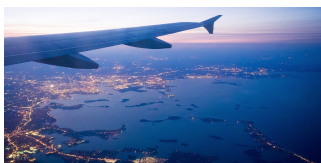
Location: Tour starts in front of the DVHQ Art Botique

533 Colyton, Los Angeles, CA 90013

Event details: click [here](#)

Questions? Contact [Rachel Thommen](#)

Summer Send-Off for Class of 2022



Summer Garden Party for first-years, parents and alumnae!

Date: Sunday, August 19th, 2018

Time: 2:30-4:30pm

Location: Home of Kyle Neal '83 in West Hollywood

(address provided upon RSVP)

Event details: Click [here](#)

Photo Album



Thanks to those who came out for the LA Pride Parade!



It was a great afternoon for the WAAD and WLAN 15th Annual High Tea "Quinceañera" on June 16th!



WCLA Annual Board Meeting at Julia Weinstein's home!

Please check out our WCLA website to see [photo albums](#).

Get Involved

Join **The Hive** networking platform: <https://hive.wellesley.edu>

Wellesley in Entertainment (WIE)

If you are working or want to work in film, TV, media, communications, or the arts, join the Wellesley In Entertainment group and attend informational panels, networking events, and screenings of alum work. Contact [Kate Erickson '05](#).

Wellesley Latina Network (WLAN)

To get involved with WLAN and support Latina and Hispanic Admission/Recruitment, College Connection and Alumnae Community at Wellesley and in the Alumnae Network, please contact [Kathy Silva '16](#).

Wellesley Alumnae of African Descent (WAAD)

To get involved with WAAD, please contact [Jackie Olivier '82](#).

Wellesley Alum Pride Alliance (WAPA)

To get involved with WAPA, please contact WCLA.WAPA@gmail.com.

Wellesley Friends of Art

To get involved or learn more, please contact [Friends of Art](#).

Wellesley Entrepreneurs' Group

If you are an entrepreneur, or interested in becoming one, and would like to join a monthly meeting of the Wellesley Entrepreneurs group for Southern California, please contact [Stephanie Sunwoo '97](#) or [Karen Jordan '91](#).

WCLA Career and Life Transitions Group

Stuck in a rut? Try something new! New Job! New life challenge! A small group from the '80's classes have been gathering every two months at a Beverly Hills wine bar to catch up and share ideas about new directions--planned and unplanned. If you are interested in joining, please contact [Julie Hogenboom '87](#).

Please Support our Club

Student Admissions - Represent Wellesley at Career College Fairs and/or participate in prospective student interviews.

To learn more, click [here](#).

Please contact admission@wellesley.edu to volunteer.

Wellesley Book Award Program

In 2018, we honored seven (7) young women--students who have been top scholars as well as talented performers in extracurricular areas--with a Wellesley College Alumnae Association Book Award. The Book Award Program recognizes high-achieving young women who have excelled and gives them the opportunity to become better acquainted with Wellesley. It also helps some areas of the country such as California become more familiar with Wellesley. Please learn more about the book award [here](#).

Many thanks to our alums who supported the book award this month for additional nominated students. Our thanks go to:

Jean Billyou '88

Joi Rideout '82

If you are interested in donating a book award, please contact WCLosAngeles@alum.wellesley.edu. It is a \$30 donation to sponsor each book award.

WCLA Board Volunteers and Event Hosts

If you are interested in serving on the WCLA board or in offering your home as a location for WCLA events, please contact WCLosAngeles@alum.wellesley.edu. Click [here](#) for more information on board positions.

WCLA Membership

If you live in the Los Angeles area, please consider becoming a member of WCLA or renewing your membership. Membership provides discounted event tickets, and of course, the chance to support your local Wellesley Club including valuable programs such as lectures with visiting Wellesley professors and faculty, alumnae career panels, recruitment in local high schools and college fairs, and the annual Book Awards.

Lifetime Membership: One-time cost of \$500

Annual Membership Dues:

- Recent Graduate (Class of '17): \$0
- Young Alumna (Classes of '13-'16): \$25
- Regular Membership: \$50

Annual memberships are valid for one year from the date of purchase. Recent Graduate and Young Alumna membership levels are updated at the end of each academic year. Dues can be paid [online](#). Please be sure to log in to the WCLA site first.

If there are issues with logging into the system, you can first try the reset app which can be found [here](#). If you need further technical help with your login, please use [this form](#).

You can also mail a check to Brenna Vredevelde, one of WCLA's Co-Treasurers. Contact her at bvredevelde@gmail.com. Please make checks payable to Wellesley Club of Los Angeles, include your graduation year and specify as "membership dues".

Connecting

WCLA on Facebook

Stay up to date on events, share information with fellow alums and join our Facebook Community here: <https://www.facebook.com/groups/WellesleyClubLosAngeles>

Help for joining the WCLA Facebook Group:

- 1) First join the master Wellesley College Facebook group:

<https://www.facebook.com/groups/groupsatwellesley/>

If you are unable to join because it asks for a Wellesley email address, contact the Wellesley Help Desk to reset your password helpdesk@wellesley.edu or 781-283-3333.

- 2) Request to join the Wellesley in LA group at this link:

<https://www.facebook.com/groups/WellesleyClubLosAngeles/>

Wellesley Hive: <https://hive.wellesley.edu/hub/the-hive/home>

Wellesley Club of Los Angeles: <https://losangeles.alum.wellesley.edu/>

Wellesley Young Alumnae in Los Angeles: [Wellesley Young Alumnae in Los Angeles](#)

WCLA Board

*A big welcome to our newest board member: Charlotte Kiang!
Thanks to Erika Spitzer who is transitioning from Club President (after 4 years) to Past President.*

President: Lori Dreischmeier

Vice President: Erin Copenbarger

Co-Treasurer and Website Manager: Brenna Vredevelde

Co-Treasurer: Henrietta Wong

Secretary: Alexandra Hatem

Alumnae Admission Representative (AAR), LA: Mei Ling Messner

Alumnae Admission Representative (AAR), OC: Rachel Newman

Book Award Chair: Alexandra Nagourney

Young Alumnae Representative: Rachel Thommen

Website Events & News: Lian Jue

Social Media: Mai Perches

Newsletter Editor: Beth Schaaf

Photographer and Photo Curator: Jda Gayle

Programming Chair & Faculty Speaker Chair: Ilene Tsui

Day to Make a Difference/Community Service Chair: Charlotte Kiang

Wellesley in Entertainment (WIE) Representative: Michelle Lirtzman

WLAN Representative: Kathy Silva

WAAD Representative: Jackie Olivier

WAPA Representative: Malique Carr

WCLA Book Club Representative: Ottavia Montingelli

Friends of Art Representative: Melissa King

Wellesley Entrepreneurs Representative: Stephanie Sunwoo

Past President: Erika Spitzer

Stay Connected
with Wellesley
College Club of Los
Angeles

Club President
[Lori Dreischmeier](#)
['86](#)

Visit Our
[Website](#)

