



Wellesley College Club of Los Angeles



Dear [first_name],

Happy 2020! We're excited to start a new year and a new decade together! In particular, we're thrilled to honor the 100-year anniversary of the Wellesley College Club of Los Angeles this year!

- **RSVP for an Update from Wellesley College featuring a keynote address from the Dean of Students on Saturday, February 29, 2020!** -- We're very much looking forward to starting our 100th year anniversary of the WCLA with a visit from three special Wellesley College visitors: Sheilah Shaw Horton (Vice President and Dean of Students), Kathryn Harvey Mackintosh '03 (Executive Director, WCAA) and Mary Casey (VP for Development). Please Register [here](#).
- **Neighborhood Circles are launching this month!** We have 155 alums participating in 12 Circles in LA and 4 in Orange County! We love your enthusiasm and can't wait to hear reports of your inaugural meetings.
- **Holiday Party photos!** We had an incredible turnout for our holiday party in December and loved seeing so many of you! You can see photos on our [WCLA website](#).

As always, please reach out with any suggestions or questions by contacting: WCLosAngeles@alum.wellesley.edu. Also, please contact us for accessibility information regarding any event. If an event ticket causes undue financial burden, we'll find a solution that supports your attending.

We wish you an amazing year in 2020 and hope to see you at an event soon!

Your WCLA Board

Upcoming Events

Events below are listed in chronological order

- January 2020: Wellesley Circles launch in neighborhoods
- January 12, 2020: WCLA Book Club
- January 14 and 15, 2020: Job Shadow Program
- January 17, 2020: WAPA at an Ivy League Mixer at the Abbey's New VIP Room
- February 1, 2020: Young Alum Galentine's Brunch at Nighthawk Breakfast Bar in Venice
- February 5, 2020: 1st Annual All Ivy Greater Palm Springs Gathering

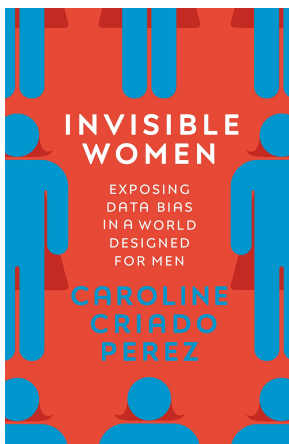
- February 16, 2020: WCLA Book Club
- **February 29, 2020: An Update from Wellesley College with special guests from the college**

STAY CONNECTED

- **Wellesley Club of Los Angeles:** <https://losangeles.alum.wellesley.edu/>
- Reach the **Wellesley Club of Los Angeles:** WCLosAngeles@alum.wellesley.edu
- Wellesley Hive: <https://hive.wellesley.edu/hub/the-hive/home>
- **WCLA on Facebook**
 - **Wellesley Young Alumnae in Los Angeles:** This Facebook page is for all Wellesley Alumnae of Los Angeles/Orange County
<https://www.facebook.com/groups/102080626551375/?t=60722-304008>

UPCOMING EVENTS

WCLA Book Club - January



Book title: Reading options are your choice between two of the nonfiction titles from our survey: Invisible Woman by Caroline Criado-Perez or Doing Harm by Maya Dusenbery. We will be meeting at [Black Dog Coffee](#).

Date: Sunday, January 12

Time: 1-3pm

Location: Black Dog Coffee

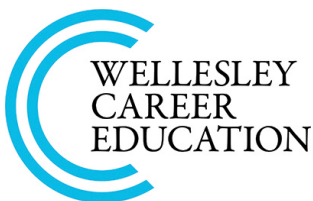
5657 Wilshire Blvd

Los Angeles, CA 90036

Mid-Wilshire

RSVP: Email [WCLA Book Club](#)

Career Education Winter Job Shadow



Wellesley Career Education is holding the January 2020 winter job shadow program **January 14 and 15**. There will be about 15 students participating in the area. Details [here](#).

WAPA Joins Ivy Pride Alliance LA for a Mixer at The Abbey's New VIP Room



Join WAPA at Ivy League Alliance LA's mixer at The Abbey's "With-In," new VIP room. No cover charge and no-host food and drink. Connect with old friends, meet new ones, and have a great evening! Co-hosted by IvyQ, Stanford Pride, Duke LGBT Network, Brown TBGALA, Cornell GALA, Harvard GSC, Harvard Club of Southern California, PennGALA, Cal Club of Los Angeles, UCLA Lambda, USC Lambda, the UChicago LGBT Alumni Group, and Princeton BTGALA

Date: Friday, January 17, 2020

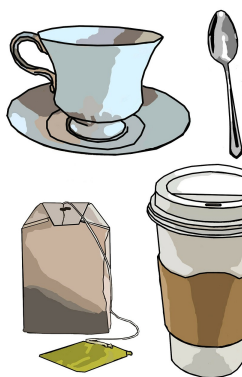
Time: 6:30-9:00pm

Location: The Abbey, "With-In" VIP room 696 Robertson Blvd. West Hollywood, CA 90069

RSVP Required: Please RSVP [here](#).

Questions? Please contact wcla.wapa@gmail.com

Young Alum Galentine's Brunch at Nighthawk Breakfast Bar in Venice



Join us for a Young Alum Galentine's Day Brunch! Co-hosted by Nicole and Rachel, please RSVP by January 27th so that we may get a table in advance (we need a party of 8 in order to reserve a table).

Date: Saturday, February 1, 2020

Time: 11am

Location: Nighthawk Breakfast Bar

417 Washington Blvd, Venice, CA 90292

RSVP required: Please RSVP by emailing

rthommen@wellesley.edu

See the menu [here](#).

1st Annual "All Ivy" Greater Palm Springs Gathering

Tell your fellow alumni/alumnae to join us! (Friends and partners welcome!) Similar events take place in US resort cities (Naples and Vero Beach) and Europe. We are hoping to plan more events, visits, discussions for residents and snowbirds in the future. Cash bar and light snacks.



Date: February 5, 2020

Time: 5:30-7:30pm

Location: Cimarron Country Club, 67603 30th Avenue,

Cathedral City, CA 92234

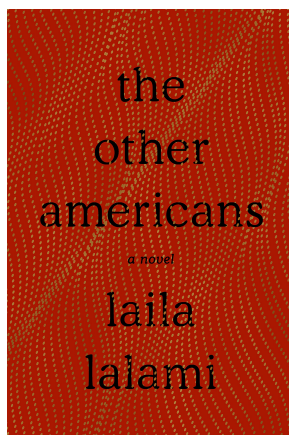
Pricing: \$10 payable at door

RSVP: By January 29, 2020 to paulasinclair1@sky.com

Questions?: Contact paulasinclair1@sky.com

WCLA Book Club - February

For our February meeting we've picked *The Other Americans* by Laila Lalami. We will be meeting at [Black](#)



[Dog Coffee.](#)

Date: Sunday, February 16, 2020

Time: 1-3pm

Location: [Black Dog Coffee](#)

5657 Wilshire Blvd

Los Angeles, CA 90036

Mid-Wilshire

RSVP: Email [WCLA Book Club](#)

2020: An Update from Wellesley College



An afternoon featuring a keynote address from the Dean of Students. Join us in welcoming new campus leadership and stay for a reception with our College guests.

Wellesley College Guests:

[Sheilah Shaw Horton](#), Vice President and Dean of Students,

Wellesley College

[Kathryn Harvey Mackintosh '03](#), Executive Director, Wellesley College Alumnae Association

[Mary Casey](#), Vice President for Development, Wellesley College

Date: Saturday, February 29, 2020

Time: 2:00-4:30 pm

Location: Home of Amy Sommer '87 in Pacific Palisades (Address and parking directions provided to registered guests.)

RSVP required: Click [here](#) to RSVP.

Please contact WCLosAngeles@alum.wellesley.edu if you have questions.

Photo Album

2019 Holiday Party at The Wellesbourne





**Friends of Art Docent Tour of "Manet & Modern Beauty" at The Getty on
December 7, 2019**





Please check out our WCLA website to see more photos from these and other events in our [photo albums](#).

Please Support our Club

WCLA Board Volunteers and Event Hosts

If you are interested in serving on the WCLA board or in offering your home as a location for WCLA events, please contact WCLosAngeles@alum.wellesley.edu

Student Admissions - Final month!

We still need interviewers! Reports are due mid-February. And if you can use Skype, the College can use your help. Sign up now for one or two interviews and practice for next year. The Los Angeles group has 70 interviews requested so far and 30 completed. The Orange County group also has unassigned interviews (If that's too far, use Skype!). To learn more, click [here](#).

Please contact admission@wellesley.edu to volunteer. Call Belinda at 213-304-0802 with questions.

Wellesley Jewish Alumnae Announcement

The Wellesley Jewish Alumnae group is excited to host their next Shabbat Across the Miles! Shabbat Across the Miles is an event in which alums around the world get together for Shabbat at the same time. The idea is to host events that build connections among alumnae who live near each other, while being a part of our global community.

- The group is looking for alums in each city who can host a meal or an activity at their homes, work, or community centers, to which local Wellesley alumnae can be invited. The type of event is up to the host.
- Past events have included a sit-down dinner, pot luck dinner, challah baking, hamantaschen making, and a wine tasting. You can choose to host on your own, ask participants to bring items, or ask WJA to find a co-host to join you. It's totally up to you.
- Email wjaprogramming@alum.wellesley.edu or WJAPresident@alum.wellesley.edu for information.

- Please email WCLosAngeles@alum.wellesley.edu if you would like to be a local rep and join the WCLA Board.

Book Awards

Since 1982, the Wellesley Book Award Program has honored high achieving high school students. If you'd like to suggest a school to give an award, please contact WCLosAngeles@alum.wellesley.edu. You can see a list of LA and OC schools that have previously awarded the book at this [link](#).

Wellesley Banner

A friendly reminder that we have a Wellesley College banner that you can borrow for a special event. Please contact WCLosAngeles@alum.wellesley.edu

WCLA Membership

If you live in the Los Angeles area, please consider becoming a member of WCLA or renewing your membership. Membership provides discounted event tickets, and of course, the chance to support your local Wellesley Club including valuable programs such as lectures with visiting Wellesley professors and faculty, alumnae career panels, recruitment in local high schools and college fairs, and the annual Book Awards.

Lifetime Membership: One-time cost of \$500

Annual Membership Dues:

- Recent Graduate (Class of '19): \$0
- Young Alumna (Classes of '15-'18): \$25
- Regular Membership: \$50

Dues can be paid [online](#). Please be sure to log in to the WCLA site first.

If you'd prefer to pay by check, please contact WCLA Co-Treasurers for instructions.

Get Involved - Shared Identity Groups (SIGs)

Wellesley in Entertainment (WIE)

If you are working or want to work in film, TV, media, communications, or the arts, join the Wellesley In Entertainment group and attend informational panels, networking events, and screenings of alum work. Contact [Kate Erickson '05](#).

Wellesley Latina Network (WLAN)

To get involved with WLAN and support Latina and Hispanic Admission/Recruitment, College Connection, and Alumnae Community at Wellesley College and in the Alumnae Network, please contact WCLosAngeles@alum.wellesley.edu

Wellesley Alumnae of African Descent (WAAD)

To get involved with WAAD, please contact [Jackie Olivier '82](#).

Wellesley Alum Pride Alliance (WAPA)

To get involved with WAPA, contact Malique Carr '05 at WCLA.WAPA@gmail.com.

Wellesley Friends of Art

To get involved or learn more, please contact [Friends of Art](#).

Wellesley Entrepreneurs' Group

If you are an entrepreneur, or interested in becoming one, and would like to join a monthly meeting of the Wellesley Entrepreneurs group for Southern California, please contact [Stephanie Sunwoo '97](#) or [Karen Jordan '91](#). Facebook: [Wellesley Entrepreneurs of Los Angeles](#)

Career Conversations

Stuck in a rut? Try something new! New Job! New life challenge! Our small group from the '80's classes have grown from gathering every two months at a wine bar in Beverly Hills for a "Career Transitions Group" to getting together for "Career Conversations" led by alums in various careers. If you'd like to recommend a speaker, please email WCLosAngeles@alum.wellesley.edu.

The Plato Society of Los Angeles

Wellesley grads Nancy Bott '64 and Sue Allen '47 have been members of the PLATO Society of Los Angeles for many years and invite you to join them at the peer-led study discussion groups in Westwood Village. To learn more, check out www.platola.org or contact Nancy at nancybott@verizon.net.

Please click [here](#) to see our WCLA Board leadership.

