



Chicago Wellesley Club



Dear [first_name],



***Our Holiday Tea is Sunday Dec.
8***
RSVP TODAY!

Meet our Scholarship Recipient: Darina "Dasha" Postupaka '21



The club is delighted to announce Darina "Dasha" Postupaka '21 as the 2019-2020 recipient of a one-year gift from the Chicago Wellesley Club Scholarship Fund. Dasha is a junior who grew up in Tinley Park, IL and attended Victor J. Andrew High School there. She writes: "I am so grateful to the Chicago Wellesley Club for helping me achieve my goals at Wellesley. I am a Biology Major on the Pre-Med track. I live in Severance Hall. This summer, I studied abroad at Lake Baikal in Siberia doing interdisciplinary research on

climate change and its effects on the local population. This photo was taken on our ship, 'The Kozhov', at Lake Baikal." Dasha is a member of the [Wellesley Community - Chicago](#) discussion group on Facebook. Are you? [Visit it and join now](#), and say hello to Dasha.

Support the Chicago Wellesley Club Scholarship Fund

The [Chicago Wellesley Club Scholarship Fund](#) has supported the Wellesley education of Chicago-area students with financial need for **80 years**. Please continue our generous tradition with your [fully tax deductible donation](#) today.

We say "thank you" to our alumnae donors, including former club president **Jean Schifflin Sampson '53** whose donation of 13 vintage Wedgwood plates featuring campus scenes enabled the club to raise \$1,150 in a special gift-with-donation promotion this past calendar year.

Helen Kriz Marshall '77

Development Volunteer

[Chicago Wellesley Club Scholarship Fund](#)
scholarshipfund@chicagowellesleyclub.org

UPCOMING EVENTS

- Dec. 7: CWC Book Club - *Warlight*, by Michael Ondaatje
- Dec. 8: Annual Holiday Tea
- Dec. 11: Supper Club @ Crisp

- Jan 4: CWC Book Club - *In the Midst of Winter*, by Isabel Allende
- Jan. 30: 40s and 50s Decades Book Group - *American Wolf*, by Nate Blakeslee

ACTION ITEMS

- Support the Chicago Wellesley Club by Becoming a Dues-Paid Member

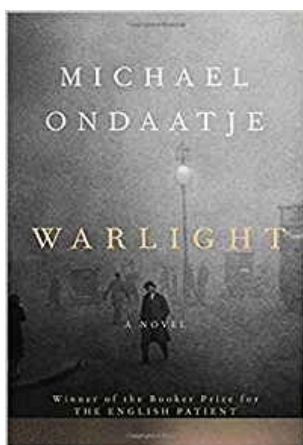
STAY CONNECTED

- Find us on [Facebook](#). "Like" our club page to get the latest news and event reminders.
- Need to reach the Chicago Wellesley Club? See a list of committee email addresses [HERE](#).

UPCOMING EVENTS

CWC Book Club: *Warlight*, by Michael Ondaatje

10:00AM - 12:00PM Sat 7 Dec 2019



From the best-selling author of *The English Patient*, this new novel tells a dramatic story set in the decade after World War II through the lives of a small group of unexpected characters and two teenagers whose lives are shaped by their unwitting involvement.

Our discussion will be moderated by Ruth Suth '57, at the home of Phyllis Adams '63, [100 Forestway, Deerfield](#).

RSVP to bookclub@chicagowellesleyclub.org.

Annual Holiday Tea

2:00PM - 4:00PM Sun 8 Dec 2019



Cookies, Recipes, Books, Singing and Fun!

At the Home of Jan Koors '84
19 E. Division Street, Chicago IL 60610

This event is no charge, but \$5 donations are welcome at the door. Click [HERE](#) to RSVP.

Click [HERE](#) for more info. Questions? Contact programs@chicagowellesleyclub.org.

Activities (optional)

- Share a Good Read: bring an unwrapped new or gently used book to share; then select one to take home.
- Recipe Exchange: Bring a Holiday Recipe written on an index card; then take a new recipe home.
- Bring a personal care product/toiletry to donate to a charitable cause. Please contact Marian Chen '99 at communityservice@chicagowellesleyclub.org if you have any questions.
- Bring Treats: The **odd-year** classes (ex. 1967, 2011) are invited to bring a small sweet or savory treat for the table. Tell us what you'd like to bring when you

RSVP.

- Sing a few favorites from the Wellesley song book. We will be singing "To Alma Mater" (<https://www.youtube.com/watch?v=QkrnNKVqW7A>), "America, the Beautiful" (<https://www.youtube.com/watch?v=URbYAaAK9OQ>), and "Let it Snow" (<https://www.youtube.com/watch?v=mN7LW0Y00kE>).

December Supper Club @ Crisp

7:00PM - 9:00PM Wed 11 Dec 2019



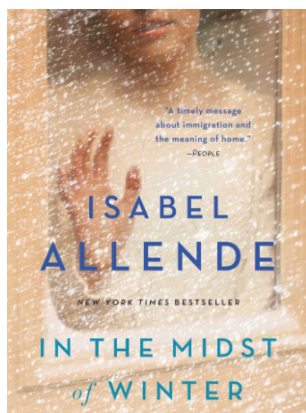
Location: [2940 N. Broadway](#), Chicago -- a walk from the Wellington stop, CTA Brown Line, and close to the #22 and #36 buses.

As the holidays approach, we are trying out a more casual (less expensive), hole-in-the-wall restaurant with awesome food. Crisp is known for its Korean-style fried chicken and vegetarian bibimbap bowls. See the menu [HERE](#).

RSVP to supperclub@chicagowellesleyclub.org.

CWC Book Club: *In the Midst of Winter*, by Isabel Allende

10:00AM - 12:00PM Sat 4 Jan 2020

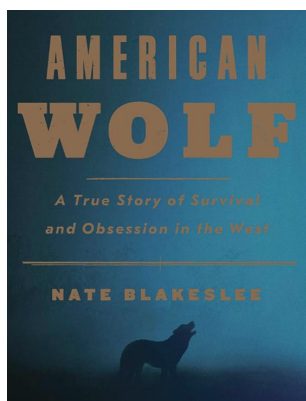


Our discussion will be moderated by Mardi Brownell '64 at the home of Holly Heap '64, [425 Davis #503, Evanston](#).

RSVP to bookclub@chicagowellesleyclub.org.

40s and 50s Decades Book Group: *American Wolf*, by Nate Blakeslee

9:30AM - 11:30AM Thu 30 Jan 2020



Please join us. We'll begin with coffee and conversation at 9:30 a.m., followed by the book discussion at 10:00 a.m. Our discussion will be moderated by Maya Percy '56.

Cost: \$5 at the door, but reservations please!

RSVP to AnneMartin '58, annemartin510@comcast.net, 847-835-1958

Location: [Vi at the Glen, 2500 Indigo Lane, Glenview](#).

Please note there is complimentary valet parking at Vi at the Glen, and public transportation to Glenview via the Metra.

ACTION ITEMS**SUPPORT THE CHICAGO WELLESLEY CLUB BY BECOMING A DUES-PAID MEMBER**

Did you know? Your dues support:

- Holiday Tea, Spring Faculty Speaker and Luncheon, Alumnae Spotlights, and other programming;
- Around Town, Supper Club, and other affinity group events;
- Marketing materials for club mailings and prospective student events;
- Donations to the Chicago Wellesley Club Scholarship Fund; and
- Community service outreach.

Please help us continue to provide excellence in connecting Chicagoland alumnae by paying your fully-tax-deductible dues today!

Dues are complimentary for 2019 graduates, \$20 for classes 2014-2018, \$40 for class of 2013 and prior years, and \$80 for Patrons. You can help us make a difference in the CWC community!

Pay online: www.chicagowellesleyclub.org. Click the "Support our Club" Tab.

By snail mail: **Chicago Wellesley Club, c/o Heather Saylor
3758 S. Emerald Ave., Chicago IL 60609

Make checks payable to the Chicago Wellesley Club.

If you have questions regarding your status as a dues-paid member, please contact Membership at membership@chicagowellesleyclub.org or log into My Wellesley Community to view your status.

****Please note, the CWC has discontinued our post office box.**

Every woman can—and should—make a meaningful contribution to her world. There is a growing recognition that women's empowerment and leadership are crucial to their own advancement, and to worldwide societal change. Wellesley and its alumnae have supported and championed women's intellectual and social development and autonomy for over 100 years.

Stay Connected
with Chicago
Wellesley Club

Club President
[Charlotte Christian](#)

Visit Our
[Website](#)

